



DUBAI MOTOR CITY - GEMS METROPOLE SCHOOL



Professional Sports Coaching & Event Management Services

www.supersportsuae.com

RUN DATES:

Sat, 29 Feb 2020
Sat, 28 Mar 2020
Sat, 18 Apr 2020
Sat, 24 Oct 2020
Sat, 28 Nov 2020
Sat, 12 Dec 2020
Sat, 23 Jan 2021

RUN DAY PROGRAM:

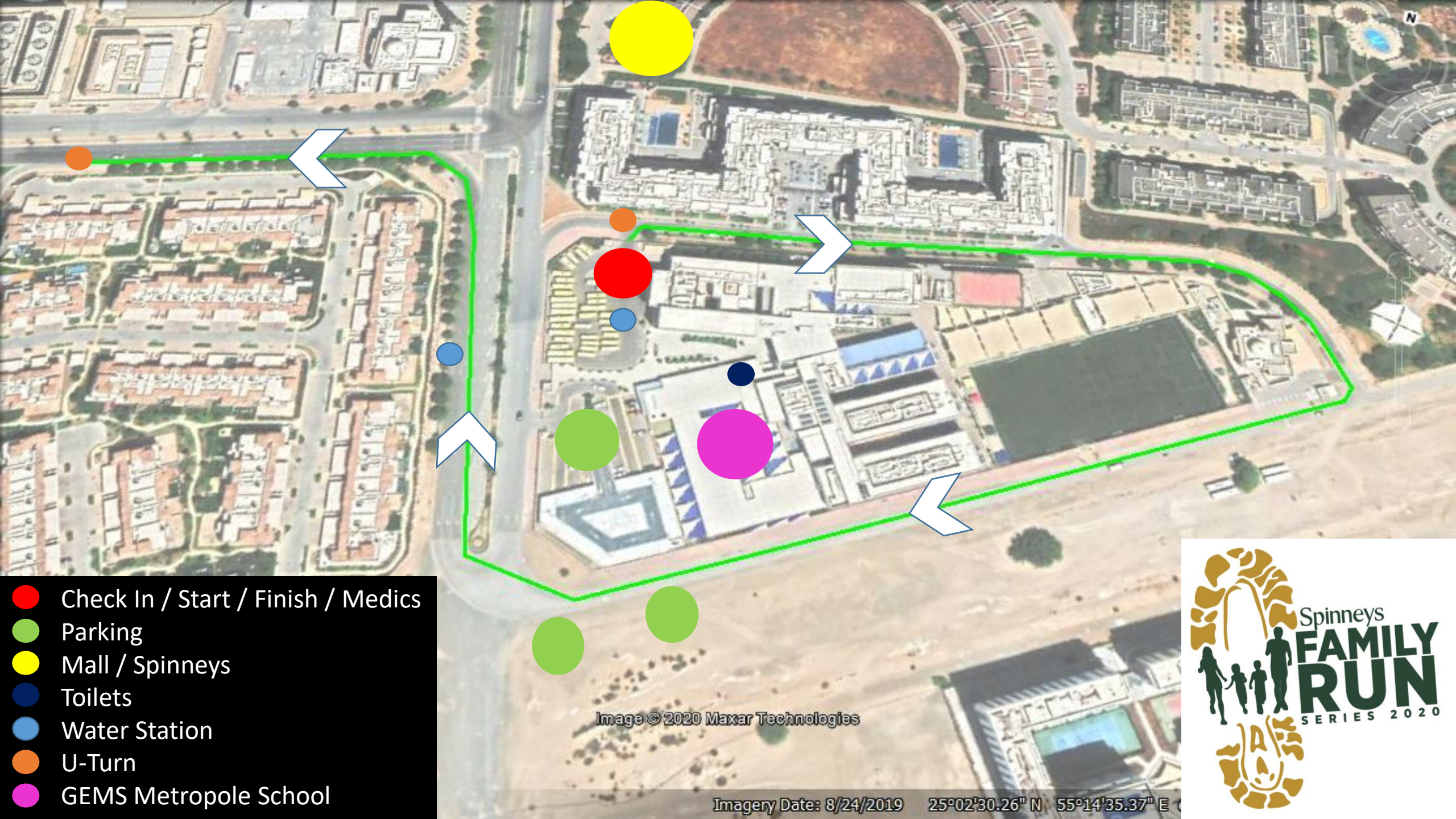
07h00: Check In Opens
07h50: Briefing
08h00: 2 lap Start
08h05: 1 lap Start
09h00: Run Finishes
09h05: Lucky Draw and
Breakfast Snack
10h00: Race Village Closes

RACE DISTANCES:

1 lap = 2.2km
2 laps = 4.4km

WATER STATIONS

1 x out on the course and 1
x at Finish Line



- Check In / Start / Finish / Medics
- Parking
- Mall / Spinneys
- Toilets
- Water Station
- U-Turn
- GEMS Metropole School

Image © 2020 Maxar Technologies

Imagery Date: 8/24/2019 25°02'30.26" N 55°14'35.37" E

